



MCS

marmoleum® composition sheet
certified sustainable sheet



The standard for
sustainable living®

creating better environments

Forbo
FLOORING SYSTEMS

MCS

marmoleum® composition sheet
certified sustainable sheet

Marmoleum Composition Sheet (MCS) addresses both the needs of our natural environment and the need for an improved indoor environment, better than any other floorcovering material available today.

NATURAL INGREDIENTS

Made from readily renewable raw materials, MCS is comprised of linseed oil, pine rosin and wood flour, mixed and calendered onto a natural jute backing. Adhesives used in installation are 100% solvent-free and maintenance does not require any heavy-metal based waxing products that tax the earth's ecosystem. No other floorcovering is as ecologically-friendly as Marmoleum Composition Sheet.

IMPROVED INDOOR AIR QUALITY

MCS has naturally occurring anti-static and antimicrobial properties, making it not only hygienic and easy to clean, but also an aid in the reduction of indoor air pollutants. MCS can also be heat-welded to eliminate "dirt traps" in the seams.

BEAUTIFUL COLOR AND ENDLESS DESIGN POSSIBILITIES

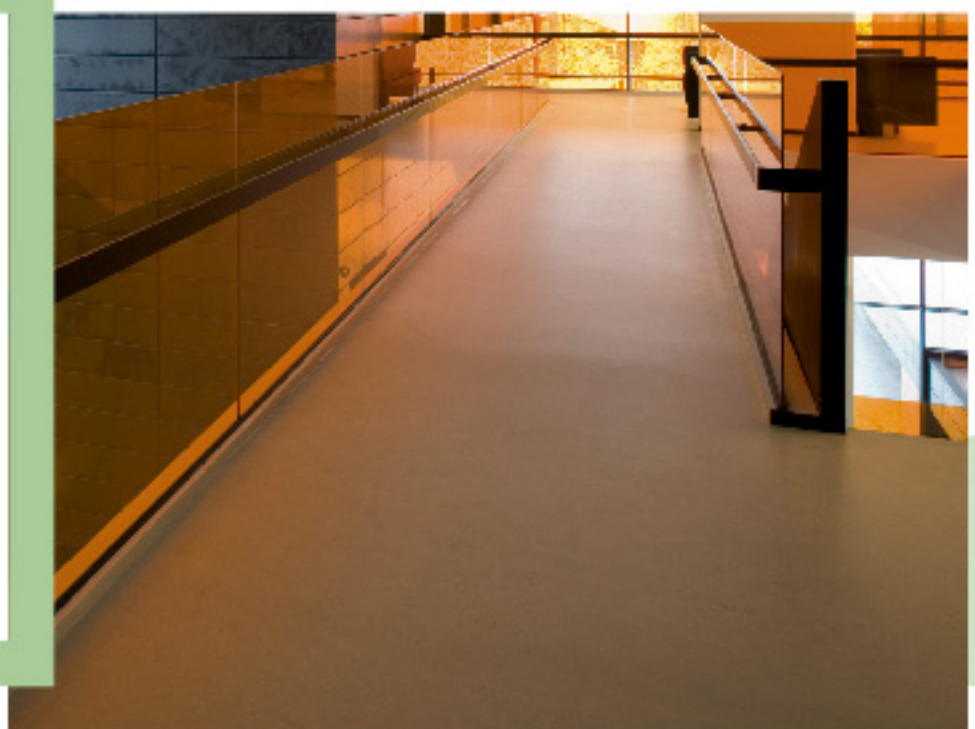
MCS is available in 30 colors that range from classic neutrals to bold, vibrant colors. Waterjet technology allows the creation of highly detailed designs, including logos and school mascots.

LOW COST OF OWNERSHIP

Marmoleum Composition Sheet features an innovative, water-based Topshield finish that considerably reduces the need for initial maintenance and chemicals, while providing lower cleaning costs and a better long-term appearance retention. MCS is one of the lowest cost maintenance floors available.



MCS combines unmatched durability, unlimited design possibilities and one of the quietest underfoot resilient floors available. From the indoor environment to the natural environment, Forbo's products and services combine design and functionality to create better environments.



The standard for
sustainable living®

Forbo Flooring Systems was awarded the Sustainable Materials Rating Technology® (SMaRT®) Sustainable Platinum Certification for Marmoleum and Bulletin Board products. The SMaRT® Consensus Sustainable Product Standard (CSPS) was developed by The Institute for Market Transformation to Sustainability (IMTS) to evaluate the environmental performance of a building product over its life. CSPS is important in combating today's climate of greenwashing, as it is an independently done, peer reviewed, consensus based standard that allows for transparent communication. For more information on Forbo's commitment to the environment, call 1-800-842-7839 to request our "Sustain" brochure or download the brochure from www.forboflooringNA.com.



MCS-2713
calico*



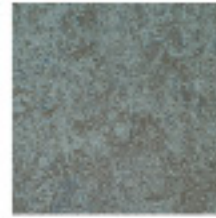
MCS-3173
van gogh*



MCS-3163
opera*



MCS-3136
concrete*



MCS-3053
dove blue*



MCS-2621
dove grey*



MCS-3038
caribbean*



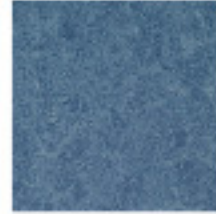
MCS-3225
dandelion



MCS-3230
blush



MCS-3032
mist grey*



MCS-3055
fresco blue*



MCS-3146
serene grey*



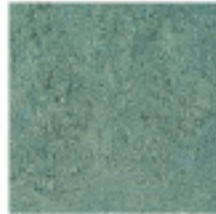
MCS-3075
shell*



MCS-3226
marigold



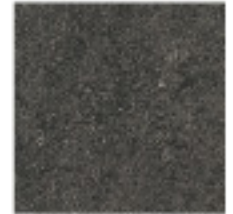
MCS-3127
bleeckerstreet*



MCS-3182
lapponia*



MCS-3221
hyacinth



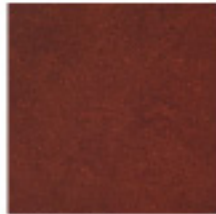
MCS-3048
graphite*



MCS-3234
forest ground



MCS-3174
sahara*



MCS-3203
henna



MCS-3123
arabesque*



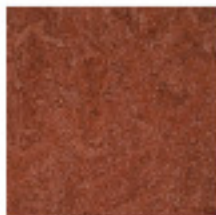
MCS-3030
blue*



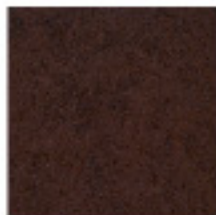
MCS-3139
lava*



MCS-3233
shitake*



MCS-3164
indian summer*



MCS-2784
coffee



MCS-3231
amethyst



MCS-3220
urban night



MCS-2939
black*

TECHNICAL DATA

Slip Resistance: Meets or exceeds A.D.A. recommendations of .6 for flat surfaces when tested in accordance with ASTM D 2047.

Fire Resistance: ASTM E-648/NFPA 253 (Critical Radiant Flux) - Class 1
ASTM E 84 - Class C

CAN/UCL - S 102.2; FSC 1 - 150, SD - 160

Castor Resistance: EN 425: Suitable for office chairs with castors.

Impact Sound Reduction: 6dB when tested in accordance with ISO 20717-2.

PHYSICAL CHARACTERISTICS (dimensions are approximate)

Width 79 inches (2 meters)

Length 105 linear feet (32 meters)

Gauge 0.080" (2.0 mm)

Backing Jute

Roll size 77 square yards (64 square meters)

*indicates colors that are part of the authentic collection and will be available until 2016

How do we measure up?

MCS vs Commercial Sheet Vinyl with backing

the "measuring stick"	MCS	CSV with backing
Ingredients	MCS is made from natural ingredients including linseed oil, wood flour, rosins, mixed and calcendered onto a jute backing. MCS is environmentally friendly.	CSV with backing is made of fillers, stabilizers, pigments and plasticizers. (The offgassing of some stabilizers and plasticizers can be adverse to indoor air quality.)
heat welding	MCS can be heat welded for water proof, hygienic seams, or for an added design option.	The seams for CSV with backing must always be treated by using seam sealers, heat welding or special adhesives.
anti-static properties	Due to its natural ingredients, MCS has anti-static properties to repel dust and dirt, making it easy to maintain a clean and healthy environment.	CSV with backing is NOT anti-static.
bio-based	100% bio-based content.	CSV with backing is 0% bio-based.
maintenance	MCS can be maintained by dry or wet maintenance systems. The dry system is easy to use and can save up to 60% in floor care costs when compared to wet maintenance systems.	CSV with backing requires higher maintenance costs. Regular maintenance requires continual waxing, including stripping and recoating.
hygienic properties	MCS is the ideal flooring for people with respiratory disorders. Its natural, inherent properties actually halt the breeding of many micro-organisms.	CSV with backing does NOT have antimicrobial properties.
<p><i>It is the consensus of all resilient flooring manufacturers that a subfloor must have the proper conditions to receive resilient flooring. The subfloor must be smooth, rigid, flat, level, permanently dry, clean and free of all foreign material such as dust, paint, grease, oils, solvents, curing and hardening compounds, sealers, bond breakers, asphalt and old adhesive residue. As a guideline ASTM F710 is referred to.</i></p>		
subfloor preparation	MCS has the ability to conform to subfloor movement without cracking or breaking.	Because of the construction of CSV with backing, foreign materials trapped between the flooring material and the subfloor may cause cracking through the surface of the product. This cracking or breaking can also hold true if movement in the subfloor occurs.

Forbo labels, certifications, standards:

membership / associations:



product:



international organization for standardization (iso):

forbo installation training:



Forbo Flooring Systems
 North American Headquarters
 8 Maplewood Drive
 Humboldt Industrial Park
 Hazleton, PA 18202
 1-800-842-7839
 570-459-0771
 Fax: 570-450-0258
www.forboflooringNA.com
www.floorcostcomparison.com
 Email: info.na@forbo.com

Forbo Flooring Systems
 Canada Office
 3220 Orlando Drive
 Mississauga, ON L4V 1R5
 1-866-661-2351
 416-661-2351
 Fax: 416-661-5362
www.forboflooringNA.com
www.floorcostcomparison.com
 Email: info.na@forbo.com

